

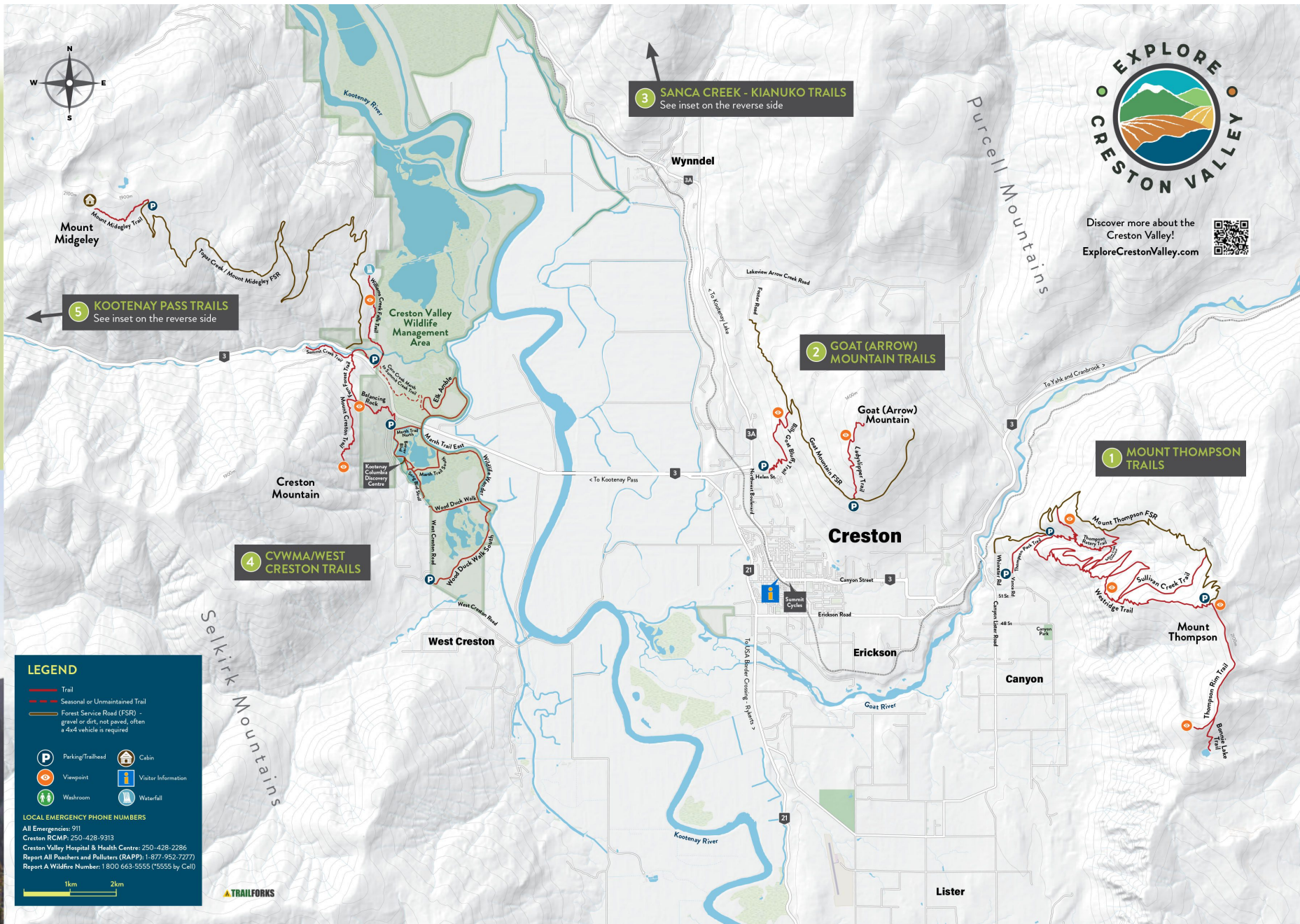


THIS MAP IS SPONSORED BY

CRESTON VALLEY HIKING MAP



ExploreCrestonValley.com



Mount Midgeley
 Mount Midgeley Trail
 Topaz Creek / Mount Midgeley FSR

5 KOOTENAY PASS TRAILS
 See inset on the reverse side

4 CVWMA/WEST CRESTON TRAILS

3 SANCA CREEK - KIANUKO TRAILS
 See inset on the reverse side

2 GOAT (ARROW) MOUNTAIN TRAILS

1 MOUNT THOMPSON TRAILS

LEGEND

- Trail
- Seasonal or Unmaintained Trail
- Forest Service Road (FSR) - gravel or dirt, not paved, often a 4x4 vehicle is required
- Parking/Trailhead
- Viewpoint
- Washroom
- Cabin
- Visitor Information
- Waterfall

LOCAL EMERGENCY PHONE NUMBERS

All Emergencies: 911
 Creston RCMP: 250-428-9313
 Creston Valley Hospital & Health Centre: 250-428-2286
 Report All Poachers and Polluters (RAPP): 1-877-952-7277
 Report A Wildfire Number: 1-800-663-5555 (**5555 by Cell)

1km 2km



Discover more about the Creston Valley!
 ExploreCrestonValley.com



Lister

